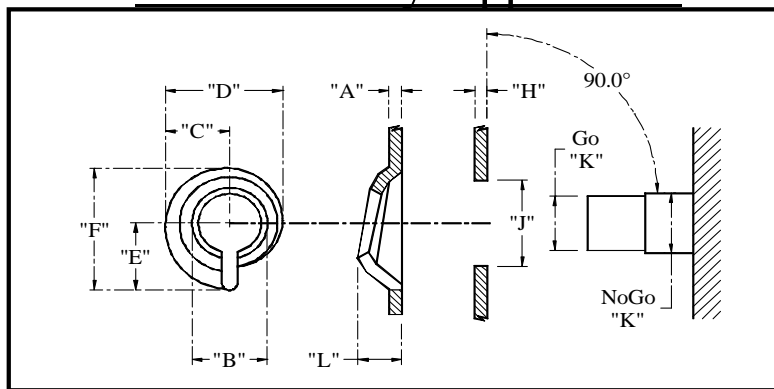


Will it Fit My Application



Material Thickness "A"			Thread diameter "B"	Dimensions				Min. "H"	Clearance Hole Ø"J" Min. - Max.	Gauge Diameter "K"		Helix Height "L" Min. - Max.
Imperial	UK Wire	Metric		"C"	"D"	"E"	"F"			Go	No-Go	
0.020/0.024	25	0.5/0.6	3	3.2	5.7	3.5	6.3	0.4	3.3 - 4.0	2.17	2.30	1.8 - 2.1
			3.5	3.4	6.2	3.7	6.8		3.8 - 4.5	2.67	2.80	
			4	3.7	6.7	4.0	7.3		4.3 - 5.0	3.17	3.30	
			5	4.2	7.7	4.5	8.3		5.3 - 6.0	4.17	4.30	
			6	4.7	8.7	5.0	9.3		6.3 - 7.0	5.17	5.30	
0.028/0.032	22/21	0.7/0.8	3	3.0	5.3	3.4	6.1	0.7	3.5 - 4.5	1.89	2.07	2.1 - 2.4
			3.5	3.2	5.8	3.6	6.6		4.5 - 5.0	2.39	2.57	
			4	3.5	6.3	3.9	7.1		4.5 - 5.5	2.89	3.07	
			5	4.0	7.3	4.4	8.1		5.5 - 6.5	3.89	4.07	
			6	4.5	8.3	4.9	9.1		6.5 - 7.5	4.89	5.07	
0.036/0.040	20/19	0.9/1.0	4	4.4	7.7	5.0	8.9	0.7	4.5 - 6.0	2.62	2.83	2.9 - 3.6
			5	4.9	8.7	5.5	9.9		5.5 - 7.0	3.62	3.83	
			6	5.4	9.7	6.0	10.9		6.5 - 8.0	4.62	4.83	
			8	6.4	11.7	7.0	12.9		8.5 - 10.0	6.62	6.83	
			10	7.4	13.7	8.0	14.9		10.5 - 12.0	8.62	8.83	
0.043/0.047	18	1.1/1.2	5	5.0	9.0	5.6	10.3	1.0	5.5 - 7.5	3.27	3.54	3.6 - 3.8
			6	5.5	10.0	6.1	11.3		6.5 - 8.5	4.27	4.54	
			8	6.5	12.0	7.1	13.3		8.5 - 10.5	6.27	6.54	
0.051/0.055	17	1.3/1.4	6	5.8	10.6	6.3	11.6	1.0	6.5 - 8.5	4.06	4.37	4.4 - 4.6
			8	6.8	12.6	7.3	13.6		8.5 - 10.5	6.06	6.37	
0.059/0.063	16	1.5/1.6	6	6.2	11.3	6.8	12.6	1.0	6.5 - 9.0	3.99	4.33	4.7 - 5.1
			8	7.3	13.3	8.0	14.6		9.0 - 11.5	5.79	6.13	
			10	8.3	15.3	9.0	16.6		11.0 - 13.5	7.79	8.13	
			12	9.3	17.3	10.0	18.6		13.0 - 15.5	9.79	10.13	
0.067/0.071	15	1.7/1.8	8	7.5	13.3	8.3	15.0	1.3	9.0 - 11.5	5.51	5.90	5 - 5.8
0.074/0.078	14	1.9/2.0	8	7.9	13.9	9.0	15.6	1.3	9.0 - 11.5	5.23	5.67	5.4 - 6.1
			10	8.9	15.9	10.0	17.6		11.0 - 13.5	7.23	7.67	
			12	9.9	17.9	11.0	19.6		13.0 - 15.5	9.23	9.67	
0.093/0.099	13	2.4/2.5	10	9.9	17.4	11.0	19.7	2.0	11.0 - 14.0	6.54	7.08	7.3 - 7.5

The information above is meant as a guide, High Torque Fastener Systems reserves the right to alter the above information at any time. Above dimensions B, C, D, E, F, H, J, K and L are in millimetres.

Above helix details can be transferred to your Computer Aided Design systems, various file formats are available. General 2-D translator - DXF & Autocad 2000i DWG, 3-D models can be transferred by IGES, STEP, or direct IDEAS or Mechanical Desktop model files. As a general viewer, details can also be exported as PDF files

Important

Dimensions (C, D, E and F) have been verified using mild steel, variations may occur with the use of different materials.
Maximum recommended material gauge thickness variations to BS 1449-1.1:1991