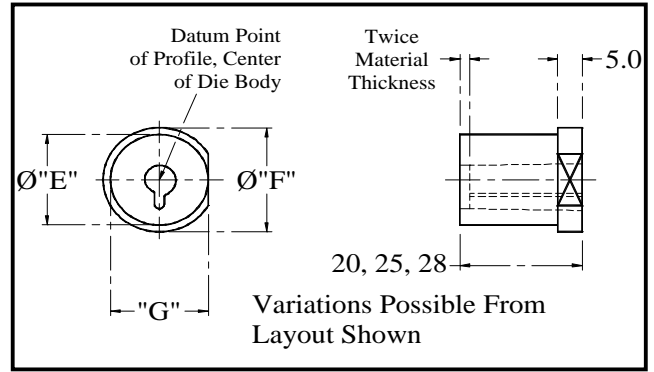
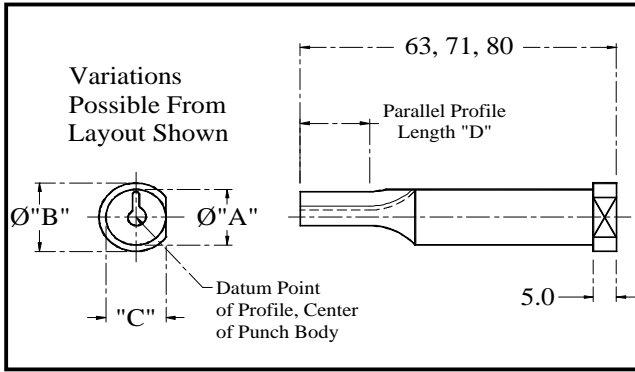


FIXED TOOLING - Standard Punch and Die Inserts



For all punches and dies please contact:

A.W. Precision Ltd, Cosford Lane, Rugby
Warwickshire, CV21 1QN.
Tel. 44 (0) 1788 542271 Fax. 44 (0) 1788 561256
www.awp-ltd.com

Milwaukee Punch Corporation, 6755 Industrial Loop
P.O. Box 313, Greendale, WI 53129, U.S.A
Tel. 001 414 421 8482
www.milwpunch.com

Material Thickness			Screw Ø	Ø"A"	Ø"B"	"C"	"D"	Ø "E"	Ø "F"	"G"
Imperial	UK Wire	Metric								
0.020/0.024	25	0.5/0.6	3	6	9	6	10	10	13	10
			3.5	8	11	8	10	13	16	13
			4	8	11	8	10	13	16	13
			5	8	11	8	15	13	16	13
			6	10	13	10	15	16	19	16
0.028/0.032	22/21	0.7/0.8	3	8	11	8	10	13	16	13
			3.5	8	11	8	10	13	16	13
			4	8	11	8	10	13	16	13
			5	10	13	10	15	16	19	16
			6	10	13	10	15	16	19	16
0.036/0.040	20/19	0.9/1.0	4	10	13	10	15	13	16	13
			5	10	13	10	15	16	19	16
			6	13	16	13	15	16	19	16
			8	13	16	13	20	20	23	20
			10	16	19	16	20	25	28	25
0.043/0.047	18	1.1/1.2	5	13	16	13	15	16	19	16
			6	13	16	13	15	20	23	20
			8	16	19	16	20	20	23	20
0.051/0.055	17	1.3/1.4	6	13	16	13	15	20	23	20
			8	16	19	16	20	20	23	20
0.059/0.063	16	1.5/1.6	6	16	19	16	15	20	23	20
			8	16	19	16	15	25	28	25
			10	20	23	20	20	25	28	25
			12	20	23	20	20	32	35	32
0.067/0.071	15	1.7/1.8	8	20	23	20	20	25	28	25
0.074/0.078	14	1.9/2.0	8	20	23	20	20	25	28	25
			10	20	23	20	20	25	28	25
			12	25	28	25	20	32	35	32
0.093/0.099	13	2.4/2.5	10	25	28	25	20	32	35	32
General Tolerance:				+0.01	+0	+0.01		+0.01	+0	+0.01
				-0	-0.5	-0		-0	-0.5	-0

Preferred sizes to ISO standards, variations from above available on request. Above dimensions are in millimetres.