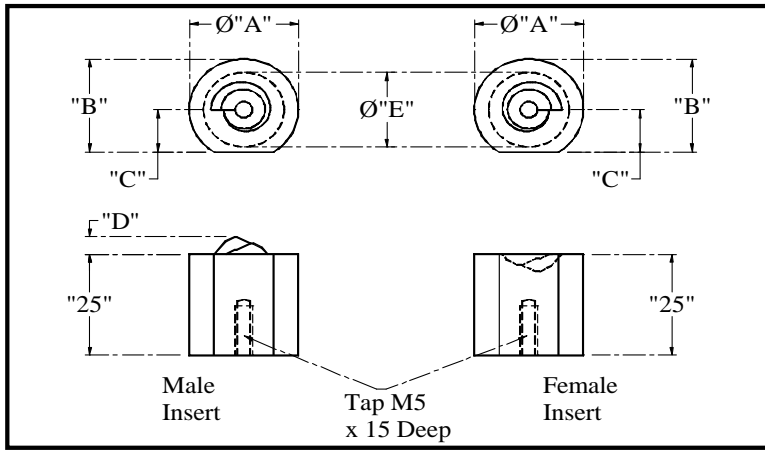


FIXED TOOLING - Standard Forming Inserts



A.W. Precision Ltd, Cosford Lane,
Rugby, Warwickshire, CV21 1QN.
Tel. 44 (0) 1788 542271
Fax. 44 (0) 1788 561256
www.awp-ltd.com

Milwaukee Punch Corporation,
6755 Industrial Loop, P.O. Box 313,
Greendale, WI 53129, U.S.A
Tel. 001 414 421 8482
www.milwupunch.com

Material Thickness			Screw Ø	Dimensions			Reference "D"	Minimum Diameter "E"
Imperial	UK Wire	Metric		Ø"A"	"B"	"C"		
0.020/0.024	25	0.5/0.6	3	13	11.5	// 0.05	2.0	8.5
			3.5	13	11.5			9
			4	13	11.5			9.5
			5	16	14			10.5
			6	16	14			11.5
0.028/0.032	22/21	0.7/0.8	3	13	11.5	// 0.05	2.5	10.5
			3.5	13	11.5			10.5
			4	13	11.5			11
			5	16	14			12
			6	16	14			13
0.036/0.040	20/19	0.9/1.0	4	13	11.5	// 0.05	3.0	12.8
			5	16	14			14
			6	16	14			14.8
			8	16	14			16
			10	25	23			18.8
0.043/0.047	18	1.1/1.2	5	16	14	// 0.05	3.8	16
			6	16	14			16
			8	25	23			19
0.051/0.055	17	1.3/1.4	6	16	14	// 0.05	4.5	16
			8	25	23			20.5
0.059/0.063	16	1.5/1.6	6	20	18	// 0.05	5.0	20
			8	25	23			22
			10	25	23			24
			12	25	23			25
0.067/0.071	15	1.7/1.8	8	25	23	// 0.05	5.2	20.2
0.074/0.078	14	1.9/2.0	8	25	23	// 0.05	6.0	21.6
			10	25	23			23.6
			12	25	23			25
0.093/0.099	13	2.4/2.5	10	32	30	// 0.05	7.2	27

General Tol.
+0 -0.05

The information above is meant as a guide, High Torque Fastener Systems reserves the right to alter the above information at any time. Above dimensions A, B, C, D and E are in millimetres.